

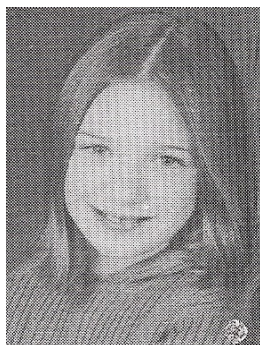
THE INSIDE EDGE



October 2011

SENIOR SPOTLIGHT ON LUCY ALBIN

When Lucy Albin takes to the ice in the 2012 Spring Show it will be her 13th Parade Ice Show. It's fitting that our first *Senior Spotlight* features Lucy. She has skated at Parade since she was five years old. Her first Ice Show was in 2000 and her first solo was in the 2004 show, "Diva's".



Lucy is preparing to test FS7 and will be honored as one of our graduating senior skaters in this year's show. It will be a special tribute since Lucy has skated in every Ice Show since her young debut.

Lucy has a long skating resume, both individually and as part of synchronized teams at ISI and USFS competitions.

She has skated at two different ISI World's Competitions in Blaine in 2000 and in Chicago in 2007.

2004 in "Diva's"

Tom and Carol Albin, Lucy's parents, have been long-time active club parents. Lucy is

the second skater in the family to skate with us. Their older daughter Brett was also a skater with Parade.

Carol has served on the PFSC board and is a perennial volunteer. Tom has thrilled us for years with his moves in the father/daughter and family numbers, often with both girls on his arms.

Lucy attends Southwest High School and is also involved in soccer, track and alpine skiing and volunteers at Animal Humane Society.

We're thrilled that she's made time in her schedule to continue skating.



Tom Albin with Lucy & Brett in 2005

(This is the first in a series that will feature this year's senior skaters)

Introducing our new name: THE INSIDE EDGE

There were two submissions in our contest to name the newsletter. Page Lipe and Kim Bercauw had the same suggestion. The editor is happy there was a consensus.

CALENDAR OF EVENTS



- Oct 4: Learn-to-Skate Tots-Delta and Pixies classes begin
- Oct 8: Skate School Freestyle 1-5 classes begin
- Oct 14-18: Upper Great Lakes USFS Regional Competition in Richfield, MN
- Oct 17: Registration due for White Bear Lake ISI Competition (coaches will need them earlier)
- Oct 22: ISI Test Session at Parade (time TBD)
- Oct 28-29: Woodbury ISI Competition
- Oct 30: (Sunday) Club Halloween Party at Breck Arena in Golden Valley, 3:00-4:30
- Oct 31: No contract ice
- Nov 19: ISI Test Session at Parade (time TBD)
- Dec 2-4: White Bear Lake ISI Competition
- Dec 12: ISI Test Session, 7:00
- Dec 17: Holiday Party at Parade, 11:30-1:00
- Dec 23: Registration due to Frosty Blades ISI competition in Blaine (coaches will need them earlier)
- Dec 27: *IllumiSkate* at Parade Ice Garden, 7:00-9:00
- Jan TBD: Plymouth Blizzard Blast ISI Competition
- Jan 21: ISI Test Session at Parade (time TBD)
- Feb 10-12: Frosty Blades ISI Competition in Blaine
- Mar 3-4: 29th Annual Blades of March competition hosted by SQSA Parade
- Apr 26: Spring Ice Show Dress Rehearsal
- Apr 27-28: Spring Ice Show

IllumiSkate

An exciting new event debuts this holiday season.

Raleigh Weld is coordinating a skater-driven exhibition designed to give skaters a chance to perform a short program on the Parade ice surrounded by luminary candles. Skaters will pick their music, do their own choreography and choose their own costume.

Families and friends will be invited and the club will provide refreshments and treats.

IllumiSkate is scheduled for December 27th from 7:00-9:00 pm. Many more details and entry forms will be coming soon.

DECEMBER TEST SESSION ADDED

ISI test sessions are scheduled for Oct. 22, Nov. 19, Dec. 12 and Jan 21. The December session (a Monday evening at 7:00 pm) is a recent addition. The other sessions are Saturdays with exact times to be determined.

Coaches will have more information. Questions can be directed to your coach or Test Chair, Michael Luedtke.

REPORTING TESTS RESULTS

Members of SQSA and Starlight will automatically have tests passed published on the website and in the newsletter effective with August tests.

Michael Luedtke is the Test Chair for SQSA and will report them for publication. Rita Goodman is the

Test Chair for Starlight and receives notices of tests passed from USFS.

If you belong to a USFS club other than Starlight or you wish NOT to have results published, email sqsaparade@gmail.com



TEST RESULTS

ISI TESTS PASSED IN AUGUST

Mimi Longe FS1
Lucy Mayer FS3
Ava Pihlstrom FS1
Sophie Sela FS5
Grace Stoelzing FS3

ISI TESTS PASSED IN SEPTEMBER

Grace Byers FS4
Allison Pasdo FS5
Mara Petersen FS5

USFS TESTS PASSED IN AUGUST & SEPTEMBER

Caroline Bercaw:
Pre-Preliminary Moves
Pre-Preliminary Free Skate
Isabel Bercaw:
Pre-Preliminary Moves
Pre-Preliminary Free Skate
Isabel Kleinschmidt-Garcia:
Pre-Preliminary Moves
Pre-Preliminary Free Skate
Abby Richardson:
Preliminary Free Skate

COMPETITION RESULTS

MINNESOTA STATE USFS CHAMPIONSHIPS

Kirby Goodman	Preliminary	Freestyle Qualifying Rd	2nd
Kirby Goodman	Preliminary	Freestyle Final Round	6th
Julia Hussian	Juvenile	Freestyle Long Prog.	6th
Kelly Jiang	Pre-Juvenile	Freestyle Final Round	3rd
Allison Pasdo	Pre-Prelimin	Freestyle Qualifying Rd	2nd
Allison Pasdo	Pre-Prelimin	Freestyle Final Round	11th
Amber Van Wyk	Adult Master	Freestyle	1st

MAPLEWOOD FALL CLASSIC (USFS)

Kirby Goodman	Preliminary	Freestyle	4th
Kirby Goodman	Preliminary	Compulsory	2nd
Izzi Gorowsky	Preliminary	Compulsory	1st
Izzi Gorowsky	Preliminary	Spins	1st
Izzi Gorowsky	Preliminary	Artistic	1st
Izzi Gorowsky	Preliminary	Interpretive	1st
Izzi Gorowsky	Preliminary	Freestyle	3rd
Julia Hussian	Juvenile	Freestyle Long Prog	2nd
Kelly Jiang	Pre-Juvenile	Freestyle	1st
Abby Richardson	Preliminary	Freestyle	2nd
Sophie			
Rothenberger	Pre-Juvenile	Freestyle Long Prog	2nd



SQSA PARADE IS ON FACEBOOK

If you are a Facebook user, be sure to subscribe to the **SQSA Parade** page for news and information and to share and enjoy news and pictures with other SQSA friends.

We've also created an event for **Blades of March 2012**. Go to the SQSA Parade page to find the link and indicate that you will be "attending" to receive updates.

LOCKERS AVAILABLE AT RINK

Need a locker at the rink? They are available to members with a \$25 deposit for the year. To ensure they are available for club skaters and are not abandoned, we've instituted a deposit system. Deposits will be refunded at the end of the season.

SKATE SCHOOL TO BEGIN

SQSA Skate School classes begin October 4th for Learn-to-Skate Tots-Delta skaters and October 8th for Freestyle 1-5 skaters. Pixies team practices also began October 4th.

If you have friends or neighbors who want to learn to skate recommend us. Forms are on the website at: www.sqsaparade.com



PAGE LIPE

Her calm and quiet demeanor is not exactly what pops into your mind these days when you think of the "Jersey Shore." But that is where Page Lipe grew up, commuting an hour into New York City to skate and train at the

prestigious Skating Club of New York.

The training paid off as she would go on to compete at the Eastern Sectional Championships where she placed 7th. She skated professionally, first as an understudy and then as a principal with the Ice Capades, touring throughout the US and Canada.

Page moved to Minneapolis when her husband, Jay took a job with General Mills. She coached with the St. Paul Figure Skating club until the opportunity to start her own skate school and business presented itself.



As a coach with Parade in 1995

Page started SportQuest Skating Academy in 1993 with a summer program and then launched it year round in 1996 at Edison (now Northeast) Arena. She brought the program to Parade Ice Garden in 2004 where she still runs the SQSA Skate School and SummerQuest figure skating training program and is a private lesson coach for many skaters.

Page is active in the Twin Cities skating community with the Starlight Ice Dance club, Twin Cities Figure Skating Association and as a competition judge.

She has coached national and international skaters throughout her career and even though her time is split between coaching and running her business, her first love is being on the ice as a coach.

Page and Jay have raised two children, Chandler, who lives in New York City and Carson who attends Southwest High School.

(This is the first in a regular feature that will profile SQSA Parade coaches)



SQSA Parade Club Members

Halloween Party

October 30th 3:00 - 4:30

Costumes Encouraged

Skating, Refreshments & Treats

Breck Arena

4210 Olson Memorial Hwy.

SKATING TUTORIAL: WHAT ARE ISI & USFS?

With several new members and lots of young skaters in our club, we debut a new feature called Skating Tutorial. We'll cover topics for parents and skaters and answer frequently asked and puzzling questions. This month's topic covers those frequently used and confusing skating initials of ISI & USFS.

ISI stands for "Ice Skating Institute", an organization of skating rinks and skating clubs. SQSA Parade belongs to this organization. ISI clubs promote recreational skating and sponsor competitions and ice shows. ISI emphasizes the fun and social aspects of figure skating while offering competitive events for individuals and teams. ISI competitions offer lots of events that foster creativity and expression, such as interpretive, spotlight, family and partner and teams events. Props are allowed in some events and creative costuming and choreography are encouraged. Our club-sponsored competition, *Blades of March* is an ISI event.

USFS refers to United States Figure Skating. It is the organization that sponsors the US National and Olympic teams. It is the most recognized of the skating organizations and has a long and proud tradition, however, USFS tends to focus more on competitive skating.

How do SQSA Parade skaters fit within these two organizations? Our club is an ISI club and our club philosophy aligns with the ISI philosophy of fun and recreational skaters who love to compete and make new friends and relationships through skating. Our skaters are often seen hanging out, giggling and pin trading with skaters of other ISI clubs at local, regional and national competitions.

Our skaters have a unique opportunity to skate for both organizations if they so choose and we do have many skaters who compete for both ISI and USFS. We have a relationship with Starlight Ice Dance Club, a USFS club which also skates at Parade Ice Garden. SQSA Parade skaters who wish to compete in USFS competitions can join Starlight and compete.

NOTES AND REMINDERS

Our **website** should be your first stop when you have questions. Use the tabs across the TOP of the home page. The website address is: www.sqsaparade.com.

Requirements for **Featured Skaters** in the Spring Ice Show have changed this year. See the handout in your welcome packet.

A "**Calendar**" function has been added along the top menu of the website. It will be updated as soon as events are finalized.

Good Luck to the skaters competing in the Upper Great Lakes Regional Competition in October:

Maria Kalina - Senior
Julia Hussian - Juvenile
Kelly Jiang - Pre-Juvenile
Sophie Rothenberger - Pre-Juvenile
Kirby Goodman - Preliminary
Izzi Gorowsky - Preliminary
Abby Richardson - Preliminary
Caroline Bercaw - Pre-Preliminary
Isabel Bercaw - Pre-Preliminary
Allison Pasdo - Pre-Preliminary
Sophie Sela - Pre-Preliminary



LOOK AS AWESOME AS THESE
SKATERS IN OUR SQSA PARADE
CLUB JACKET.

WATCH YOUR EMAIL FOR
DETAILS COMING SOON ON
HOW TO ORDER.